

## 7" Smart Industrial Display Kit CI-DK070P

**7" LCD with 800 x 480 WVGA Resolution**

**-10°C ~ 60°C Wide Operating  
Temperature**

**500 Nits Brightness with LED Backlight**

**PCAP Touch with USB Interface**

**LVDS Interface**

**LED driver Board Built-In**

**US-Based Touch Screen Integration and  
Support**

**Long-Life Industrial Grade LCD Panel**

**Compatible with Window and Linux OS**

# CI-DK070P Specifications

## LCD

<b>Model</b>	CI-DK070P
<b>LCD Size/Type</b>	7" LCD
<b>Resolution</b>	800 x 480 WVGA
<b>Display Active Area</b>	152.4 x 91.44 mm
<b>Backlight Unit</b>	LED
<b>Panel Brightness</b>	500 cd/m <sup>2</sup>
<b>Contrast Ratio</b>	800:1
<b>Response Time</b>	25 msec
<b>Viewing Angle</b>	178/178
<b>Signal Interface</b>	LVDS
<b>Power Consumption</b>	3.46 W
<b>Dimensions</b>	170 x 110 x 6.0 mm

## Touch

<b>Touch Type</b>	Projected Capacitive Touch (PCAP)
<b>Transparency</b>	≥ 83%
<b>Touch Structure</b>	G+G
<b>Dimensions</b>	178 x 116 x 3.2 mm

## Bonding

<b>Bonding Method</b>	Air or Perimeter Bond
-----------------------	-----------------------

## Mechanical

<b>Overall Dimensions</b>	170 x 110 x 9.7 mm (6.693" x 4.331" x 0.382")
---------------------------	---

## Controller

<b>Controller Type</b>	Chip-on-Board (COB)
<b>Input Supply Voltage</b>	5V (typ.)
<b>Operating Voltage</b>	Vbus to GND: 4.4V min. And 5.5V max. Vcc to GND: 2.7V min., 3.3V max.
<b>Controller IC</b>	ILI2511
<b>Touch Interface</b>	USB 2.0 Full Speed
<b>Resolution</b>	16384 x 9600
<b>Dimensions</b>	28.85 x 41 mm

## Environment

<b>Operating Temperature</b>	-10 °C ~ 60 °C Humidity 20% RH ~ 80% RH (Non Condensing)
<b>Storage Temperature</b>	-10 °C ~ 65 °C Humidity 10% RH ~ 85% RH (Non Condensing)
<b>Operating Humidity (RH)</b>	10 to 90% (non-condensing)
<b>IP Rating</b>	Front IP65 Dust & Water Resistant

## Supported OS

<b>Windows</b>	Win 10, Win 8, Win 7
<b>Linux</b>	Kernel 3.0.8 and up (x86, 32/bit with X-Window)

## Warranty

<b>Warranty</b>	1-year standard  Extended warranty options available
-----------------	--

\* Specification subject to change without notice. Updated: February 7, 2022.

# CI-AD070-01 AD Board Specifications

## Features

<b>Input Signal</b>	HDMI, VGA(optional)
<b>Support Mode</b>	DOS, VGA, SVGA, XGA, WXGA, SXGA, SXGA+, WXGA+, WSXGA+, UXGA, WUXGA, WUXGA+
<b>Color depth</b>	18bit / 24bit
<b>H-Sync. Range</b>	30-80KHz
<b>V-Sync. Range</b>	56-75Hz
<b>Output Signal</b>	2 channels LVDS, 6bit / 8bit color, NS / JEIDA mapping
<b>Audio output</b>	2W x 2
<b>Key Pad</b>	POWER, LEFT, RIGHT, MENU, SOURCE
<b>OSD Menu</b>	Brightness, Contrast, Gamma, Phase, H/V Position, OSD Position, Auto, Reset, Color temperature
<b>Power Supply</b>	12 V(+/-0.6V)(DC)
<b>Power Mode</b>	Active, Standby, Off
<b>Power Consumption</b>	3.0 Watt (No load), Standby < 3W
<b>Plug and Play</b>	Supported

## Interface and Electrical

<b>Keypad/LED (CN1)</b>	Keypad, LED interface
<b>Backlight Control(CN4)</b>	Backlight ON/OFF and dimming control
<b>Panel VCC (JP7)</b>	LCD Panel VCC (12V, 5V, 3.3V)
<b>DC JACK(DCJ1)</b>	DC +12V input
<b>AUX(JP11)</b>	Phone Jack Stereo audio input (optional)
<b>Speaker(JP4)</b>	Stereo Speaker
<b>VGA(CN3)</b>	VGA input(optional)
<b>HDMI(JP3)</b>	HDMI input
<b>USB-B(USB4)</b>	USB-B to host
<b>Touch Panel USB(J2)</b>	USB to Touch Panel

## Environment

**Heavy pressure prevented**

**Electronics discharge protection**

<b>Maximum Humidity</b>	80%
<b>Storage Temperature</b>	-10 ~ +60 degree
<b>Operating Temperature</b>	0 ~ +40 degree

\* Specification subject to change without notice. Updated: February 7, 2022

# GMB-L3APL300 Specifications

## Features

<b>CPU</b>	Intel® Atom™ E3930 Processor
<b>BIOS</b>	AMI UEFI BIOS
<b>OS Support</b>	Windows®10 IoT Enterprise LTSC 2019 64 bit
<b>System Memory</b>	Up to 8 GB in 1 slots DDR3L SO-DIMM sockets
<b>Storage</b>	1 x SATA ports(SATA 6Gb/s)
<b>Expansion Interface</b>	2 x mini-PCIe Socket (Full size support mSATA/ Half size support WiFi/BT)
<b>Ethernet</b>	2 x Gigabit Ethernet Intel® i210 IT
<b>High Drive GPIO</b>	1 x pin-header for GPIO (8bit in/out)
<b>Power Supply Voltage</b>	12~24V DC in

## Graphic

<b>Controller: Intel® HD Graphics 505</b>	- LVDS: Supports Dual Channel 24bit up to resolution 1920 x 1200 - DP: Supports DP up to resolution 4096 x 2160 - HDMI: Supports HDMI up to resolution 3840 x 2160
---	--

## I/O Interface

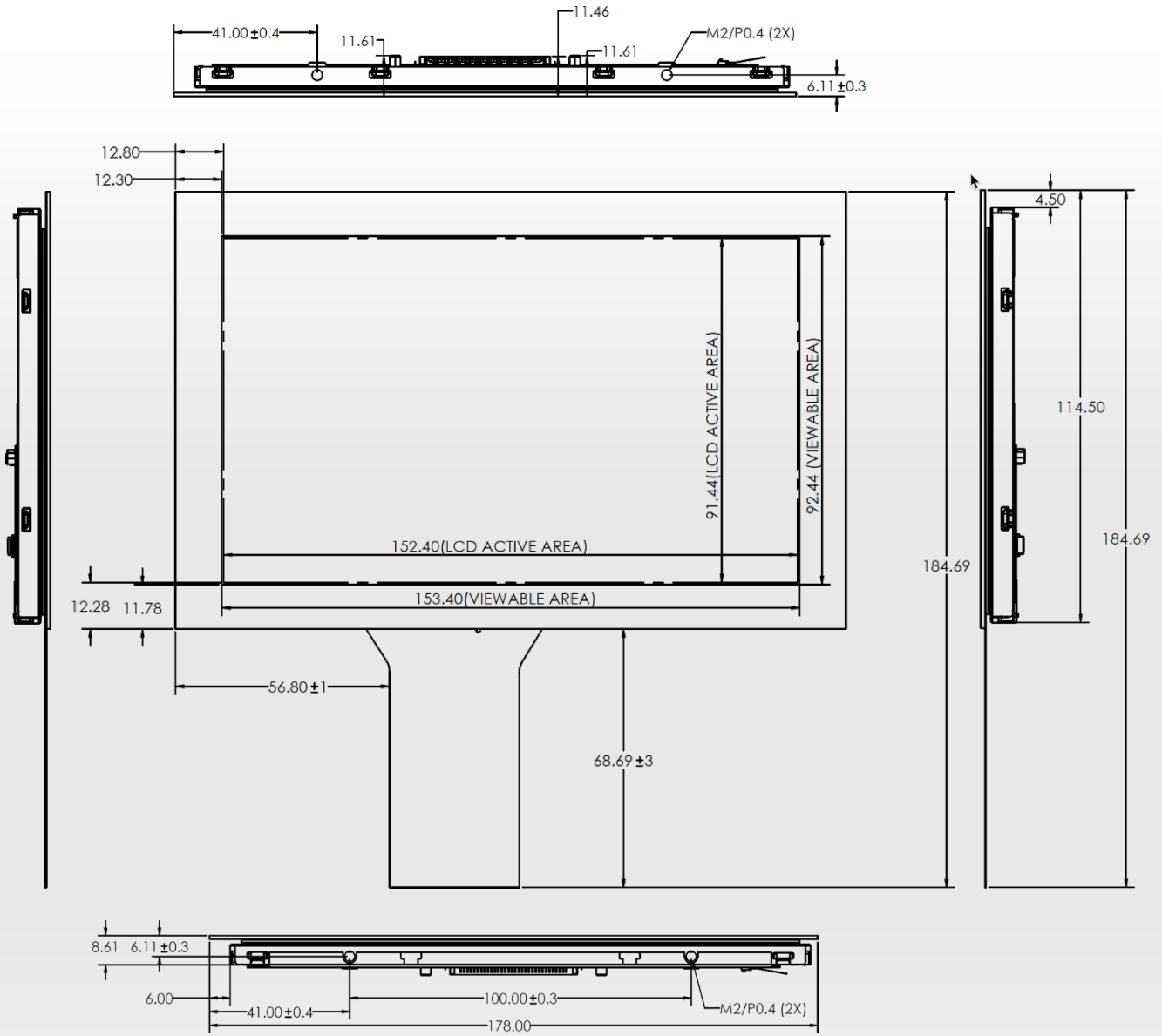
<b>Serial Port</b>	6 (1 x RS-232/422/485 with DP9 connector on Rear I/O (selected by BIOS) and 5 x RS-232 with on board pin header)
<b>USB Port</b>	6 (2 x USB3.0 on rear I/O and 4 x USB3.0 on board header)
<b>Audio Interface</b>	Audio jack on rear I/O with Line-out Line-in, Line-out, and Mic-in on board pin header

## Environment

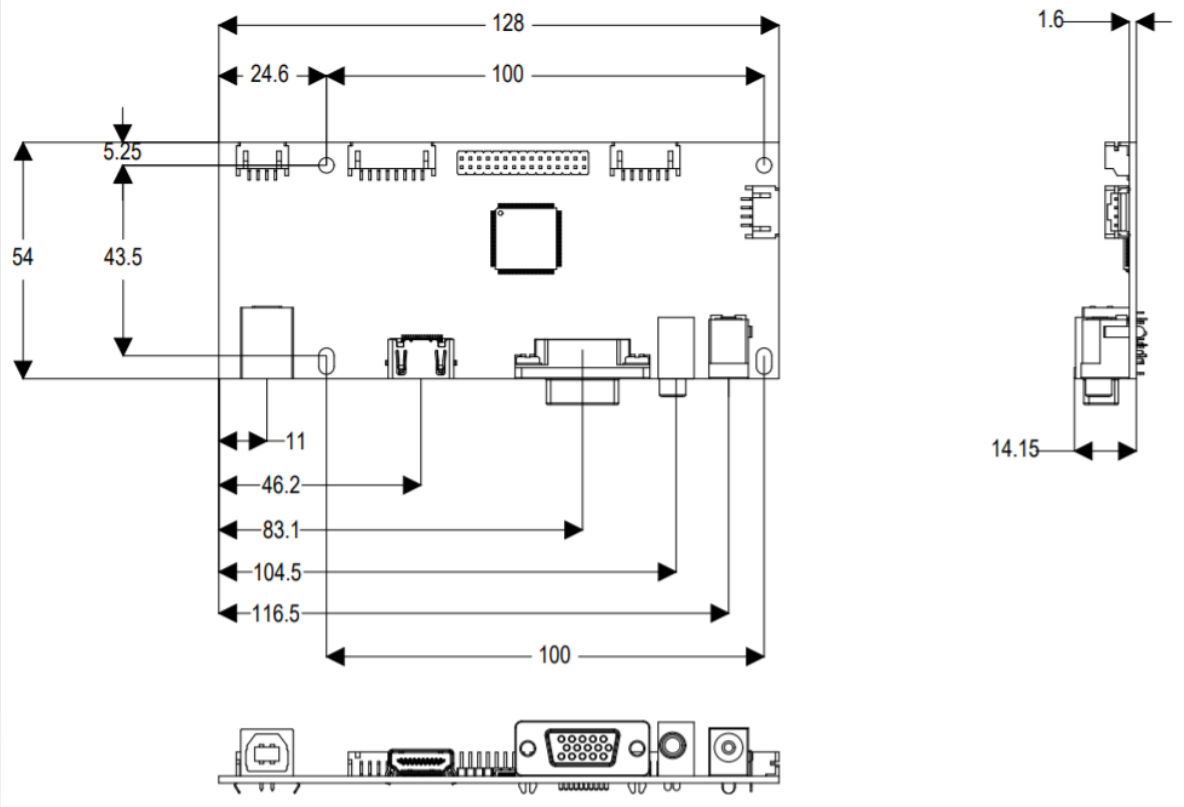
<b>Operation Temperature</b>	2 x Gigabit Ethernet Intel® i210 IT
<b>Storage Temperature</b>	-40°C~85°C
<b>Operating Humidity</b>	5~95%, Non-condensing
<b>Dimension</b>	146(L) x 102(W) mm; 5.74"(L) x 4.02"(W)

\* Specification subject to change without notice. Updated: February 7, 2022

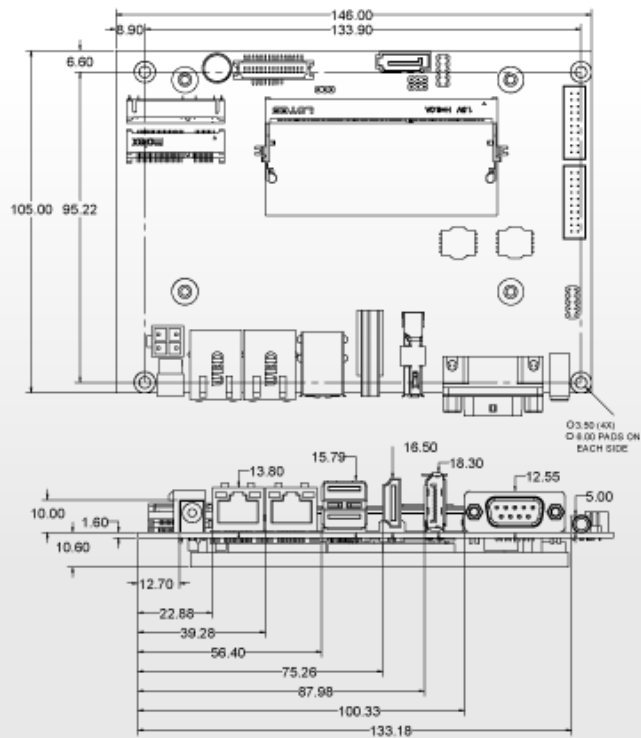
# CI-DK070P Mechanical Drawing



# CI-AD070-01 AD Board Mechanical Drawing



# GMB-L3APL300 Mechanical Drawing



## Ordering Information

Part Number	Description
CI-DK070P50WV	7" 800x480, 500nits, -10 °C ~ 60 °C, 50K, PCAP Touch Industrial Display Kit
CI-AD070-01	AD Board kit including OSD keypad, LVDS cable, LED cable, OSD cable and USB cable

Packing List	
1 x	7" 800x480, 500nits, -10 °C ~ 60 °C, 50K, PCAP Touch Industrial Display
1 x	Touch Controller Daughter Board
1 x	USB Cable

Buy Online (U.S. Customer Only): [www.ContecAmericas.com](http://www.ContecAmericas.com)

**Contec Americas Inc.**  
3991 Sarno Rd.  
Melbourne, FL 32934

**Toll Free:** (888) 285-0172

**Local:** (321) 728-0172

**Email:** [sales@us.contec.com](mailto:sales@us.contec.com)

**Global Website:** [www.Contec.com](http://www.Contec.com)