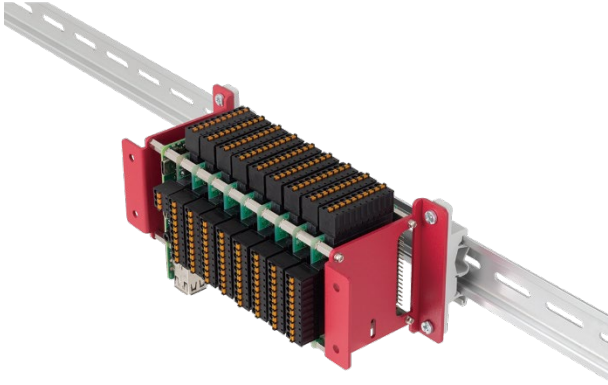


**DIN Rail Adapter
CPI-DIN01**



- * The Raspberry Pi and Raspberry Pi expansion board CPI series shown in the photo are sold separately.
- * Specifications, color and design of the products are subject to change without notice.

This product is a mount kit for mounting on a 35mm DIN rail. The product is used to set the Raspberry Pi, and CPI Series onto the 35mm DIN rail.

- *The contents in this document are subject to change without notice.
- *Visit the CONTEC website to check the latest details
- *The information in the data sheets is as of September, 2021.

Specifications

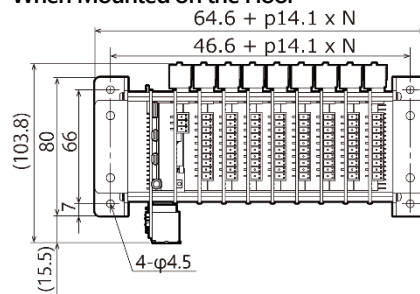
Item	Specification
Connector used	96-pin half-pitch, female connector PCR-E96FB [HONDA] or equivalent
	37-pin D-Type, female connector 17JE-13370-02(D1)[DDK] or equivalent Fitting fixed stand: 17L-002C[DDK] or equivalent. Thumb screw: UNC#4-40
	15-pin D-Type, female connector 17JE-13150-02(D1)A or equivalent Thumb screw: UNC#4-40
Cable	25 core shield cable. Conductor size: AWG#28, Conductor composition: 7pcs/0.127mm UL20276
	8 core shield cable. Conductor size: AWG#28, Conductor composition: 7pcs/0.127mm UL20276
Weight	250g

Packing List

- L-shaped sheet metal...2
- DIN-RAIL MOUNT-ING FEET...1 (Mounting feet...2, Screw...4)
- Hexagonal spacers (male)... 4 (Height 12.5mm)
- Hexagonal spacers (female)... 4 (Height 12.5mm)
- Three-point Sems Screws...4
- Clamps for prevention of cable...2
- Setup Guide...1

Physical Dimensions

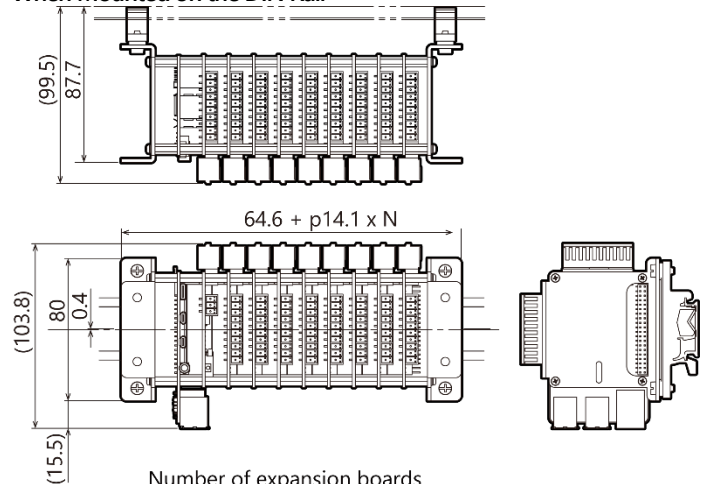
When Mounted on the Floor



Number of expansion boards
In the above image, N = 9

[mm]

When Mounted on the DIN Rail



Number of expansion boards
In the above image, N = 9

[mm]